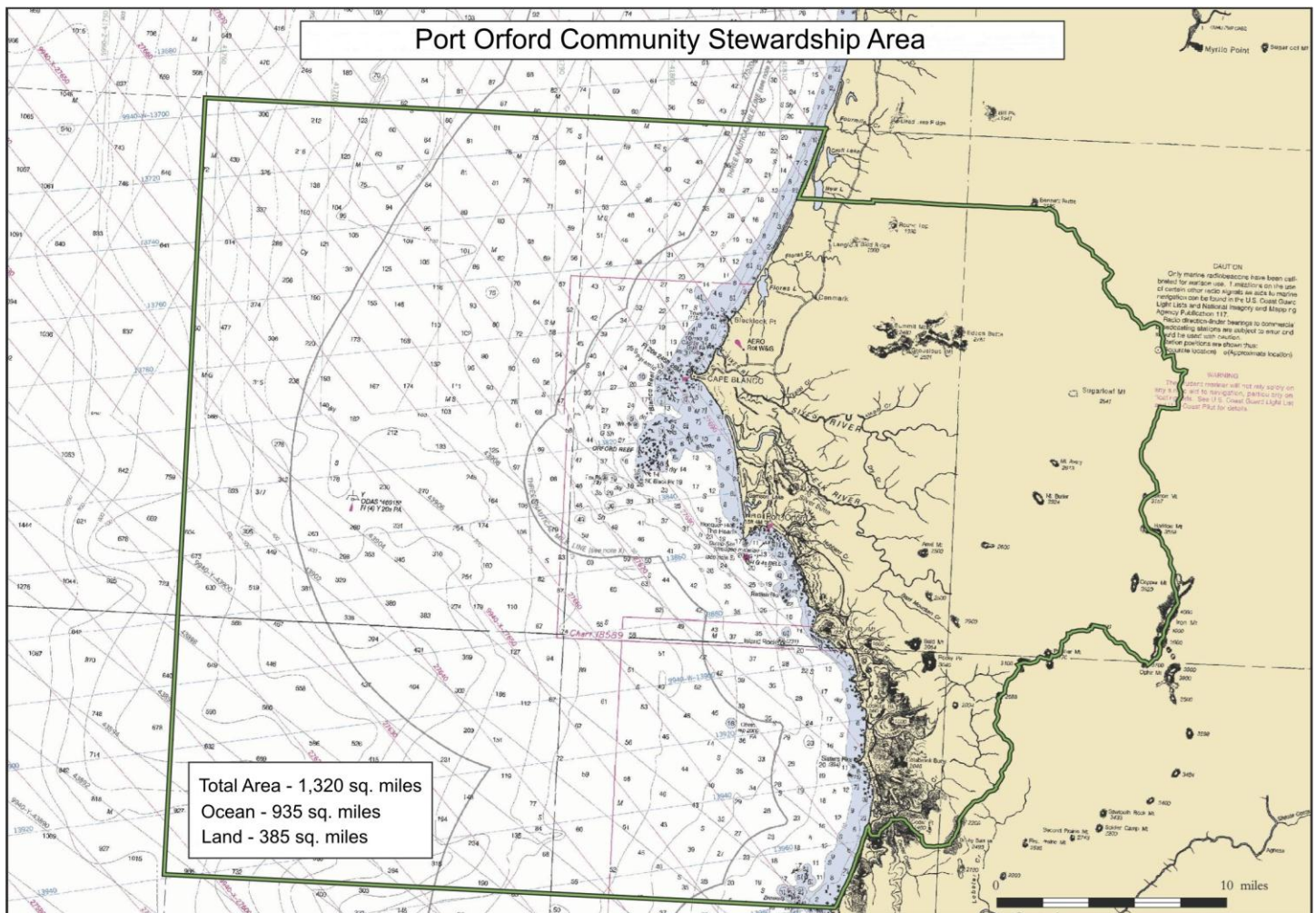


# Port Orford Community Stewardship Area

## Description:

The Port Orford Community Stewardship Area is biologically diverse and encompasses terrestrial, freshwater, intertidal, and ocean environments. The Stewardship Area is 1,320 square miles, and includes 385 square miles of terrestrial habitat and 935 square miles of ocean habitat. The area is 30 miles long (north to south), extends 18 miles offshore (west), and encompasses the Elk and Sixes River watersheds.

## Map:



## Source:

STEWARDSHIP PLAN - *Integrating Stewardship, Access, Monitoring and Research: Port Orford Community Stewardship Area*  
Prepared for Port Orford Ocean Resource Team by Pacific Marine Conservation Council and Golden Marine Consulting  
January, 2008